



MAGNACARES[®]
INVIGORATE YOUR INTERNAL STATE AT CELLULAR LEVEL

MagnaField[®]

PREMIER FULL-BODY PEMF THERAPY DEVICE

MODEL: MF2200

Micro Vibrational Pulsed Electro Magnetic Therapy (PEMF) Unit



**OPERATOR MANUAL, USER
GUIDE AND WARRANTY**

MANUFACTURED IN THE UK

MagnaField®

Premier Full-Body PEMF Therapy Device
MF2200

PRACTITIONER REFERENCE & USER GUIDE

INDEX

GENERAL NOTES	3
OPERATING INSTRUCTIONS	4
SUGGESTIONS FOR USE	5
AN INTRODUCTION TO MAGNETIC RESONANCE THERAPY	7
THE MAGNAFIELD® DEVELOPMENT HISTORY	8
OBSERVED MAGNAFIELD® EFFECTS	9
COMPARISONS OF FREQUENCIES BETWEEN THE MAGNAFIELD® AND OTHER PULSED ELECTROMAGNETIC DEVICES ON THE MARKET	10
SUGGESTED TREATMENT PROGRAMS	11-12
TECHNICAL SPECIFICATIONS	13
REFERENCES	14
WARRANTY TERMS	15
ADDRESS AND LEAVE A REVIEW	16

GENERAL NOTES

The **MagnaField®** produces gentle, oscillating micro-pulsed waves of ultra-low frequency and low power magnetic energy that mimic those of the Earth's natural magnetic currents. These devices can be used day and night continuously.

When pain is present often medication is prescribed. This may well be appropriate and may be essential to correct or to maintain physiological function and relative comfort levels. Magnetic energy is an essential part of the Earth's natural source of energy and essential to all life.

The **MagnaField®** modulates and inhibits pain signal transmissions rather than just 'blocking' the pain. This is then enhanced by the healing properties of the specifically pulsed energy fields. (1)(2)

The **MagnaField®** produces ultra-low frequency magnetic energy (within the range 0.5Hz and 18Hz) at very low power output to achieve faster pain relief without the body getting used to or becoming fatigued from the treatment.

The **MagnaField®** product is simple to use, it has been developed not only to provide temporary pain relief but to assist your body's return to a state of well-being by the gentle oscillating micro-pulsed bi-directional (negative/positive) balanced magnetic energy waves. This unit is the result of over 20 years of research to provide faster relief of painful conditions.

Medical and scientific research has shown that the gentle induction of these waves helps to reduce soreness, fatigue and other discomforts. The **MagnaField®** is effective at up to 2 metres (79 inches).

MagnaField® is a non-invasive and drug-free solution to relieve pain, speed recovery and hasten healing.

Compared to other leading brands, the **MagnaField®** device can be continually used to promote recovery without any adverse issues. This is because other brands are restricted to limiting their treatment sessions due to their higher hertz(Hz) output, making the **MagnaField®** devices safe for all, even for pregnant women, epilepsy sufferers, and individuals with pacemakers.

For healthy people, the constant use of the **MagnaField®** can help facilitate the anti-ageing process and will promote good health.

It has also been used by veterinarians, horse and dog trainers, breeders and individual pet owners. By increasing cell metabolism, oxygenation and nutrient absorption, it is also used to influence growth disorders, and problems with the skin and coat, as well as strengthening the immune system and reducing allergies.

The body heals at its best whilst we are asleep and there it is recommended to place the disc on the floor in the centre of the bed. In the case of two people sharing, both will benefit. The disc can also be placed under or next to a chair or sofa (many of our customers have seen the benefits of daily use, have also installed a **MagnaField®** in areas that they are stationary in for long periods of time).

MagnaField® is a low energy device and does not need to be switched off. In the case of a power failure the **MagnaField®** will need to be restarted. If this happens, reset the required frequency, then press Start and Repeat buttons to activate the cycles.

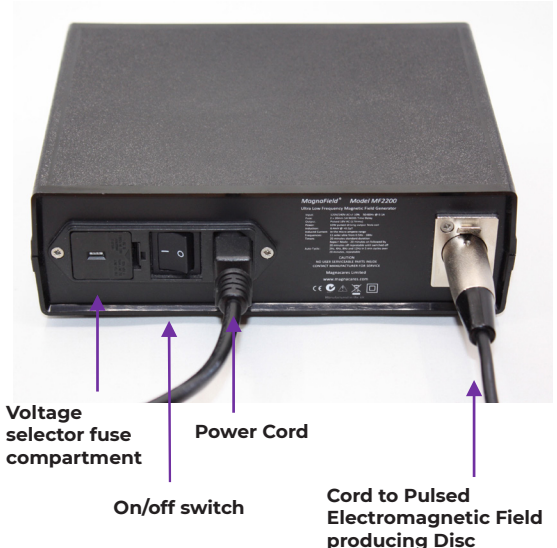
We believe that good health involves a balanced approach to lifestyle, nutrition and the avoidance of substances known to cause harm to the human body. Exercise should be approached with a common-sense attitude in respect to age, ability and disability.

(1) "Bio Magnetic Energy In Pain Relief" 2nd International Conference on Bioelectromagnetism. Melbourne, Australia 1998, R. J. Grace PhD pp143- 144.

2) "Influence of Alternating Magnetic Fields, 1-10Hz on Pain and Psychosomatic Ailments" W. Ehrmann, H. W. Ludwig, W. Sotke, 2nd Bioclimatological Conference, Munich, West Germany, Sep 1976 (Marino-Dekker 1988, pp 600-605)

OPERATING INSTRUCTIONS

1. Turn the rear panel ON/OFF switch to ON.
2. The front control panel will light up and sound a 'beep'.
3. Should the disc be damaged or incorrectly plugged in the panel will display 'PLUG' check the rear aerial connector to make sure it is fully inserted and locked.
4. Activate the 'Repeat' button for continuous use (this is preferable throughout the night at a frequency of your choice).
5. Select the desired frequency (0.5Hz is default).
6. Press the 'Start' button to begin the 20 – minute treatment period.
7. If 'Repeat' button has been selected the unit will treat using a 20 minute ON and 20 minute OFF cycle without causing fatigue.
8. To turn the unit off press the 'Start' button again and then isolate by turning the rear panel switch to the OFF position followed by the wall plug (the Magnafield uses minimal energy output and it is preferable to keep it ON 24/7 for maximum benefit).
9. If there is a power cut the Magnafield will need to be restarted by pressing the Start and Repeat button.



Sound Alerts

- **Single Low Tone:** Power On
- **Single Medium Tone:** Frequency change, time setting change, Repeat/Start/Stop/Pause
- **Two Low Tones:** Incorrect key pressed. Function not available under current conditions.

REPEAT FUNCTION

It is desirable to have multiple applications. **MagnaField® MF2200** will do this automatically. Simply select the desired frequency, then select **REPEAT** on the timer display. Upon pressing the START button the **MagnaField®** will automatically operate for 20 minutes (the timer display will count down), pause for 20 minutes, (during which the display will show '0' minutes and 'REPEAT') and then operate again for 20 minutes. This will repeat indefinitely until the unit is stopped.

AUTO CYCLIC FUNCTION

The **MagnaField® MF2200** has the unique feature of the **AUTO CYCLIC FUNCTION** which is designed to facilitate the healing process. When this function is selected the unit is programmed to automatically operate through a range of frequencies (2, 4, 8 and 12Hz) in 5 minute cycles. These frequencies, in conjunction with harmonics systematically activate lymphatic drainage, stimulate ATP production (energy supply), normalise cell membrane potential so that proper exchange of nutrients and waste materials can occur and then stimulate blood flow to supply nutrients and oxygen to the site. This combination of frequencies optimises the effects of the **MagnaField® MF2200** to promote healthy cellular activity.

SUGGESTIONS FOR USE

It is recommended to have at least 1 week of treatment at 0.5Hz irrespective of the condition it is being used for.

It has been found that the best effects are when the disc is placed on the floor underneath the centre of the bed or chair. The field produced by the **MagnaField®** addresses the whole body. The disc does not have to be in contact with the body. Clothing does not impede the field, in fact it will work as effectively through a plaster cast, wall or any material.

In addressing any condition with the **MagnaField®** the frequency selection is the most important factor. In general, the following is a guide to the possible effects at various frequencies.

0.5Hz – 4Hz Sedating, relaxing and calming effect; assists with deeper sleep. Reduction of bruising and bleeding. Lymph drainage (micro-muscular movement), 1Hz to 3Hz is most efficient for temporary pain relief.

0.5Hz – 1Hz Temporary pain relief. Reported mitosis reduction or inhibition of rogue cell activity, oxygen absorption. Balancing sodium potassium cellular exchange which can lead to improved neurological signalling.

2Hz Promotes phagocyte and T-cell production. Reported stimulation of the immune system (Thymus).

3Hz Can assist lymph drainage; also promotes sleep where 0.5Hz is insufficient.

4Hz Pain modulation for intense pain for temporary relief.

5Hz Increased DNA synthesis; cellular signalling; repair and healing.

8Hz Muscle tissue repair; muscle tone; nerve regeneration. Stimulation of ATP production. Recharging and balancing of ionic and cell membrane potentials.

10Hz General re-balancing of cellular activity; improved oxygen uptake; assists liver function.

12Hz - 15Hz Can assist in peripheral circulation; increased blood flow through vascular relaxation; more oxygen and nutrients available.

18Hz Increased metabolic rate; pre-sport or pre-exercise (for generally healthy people)

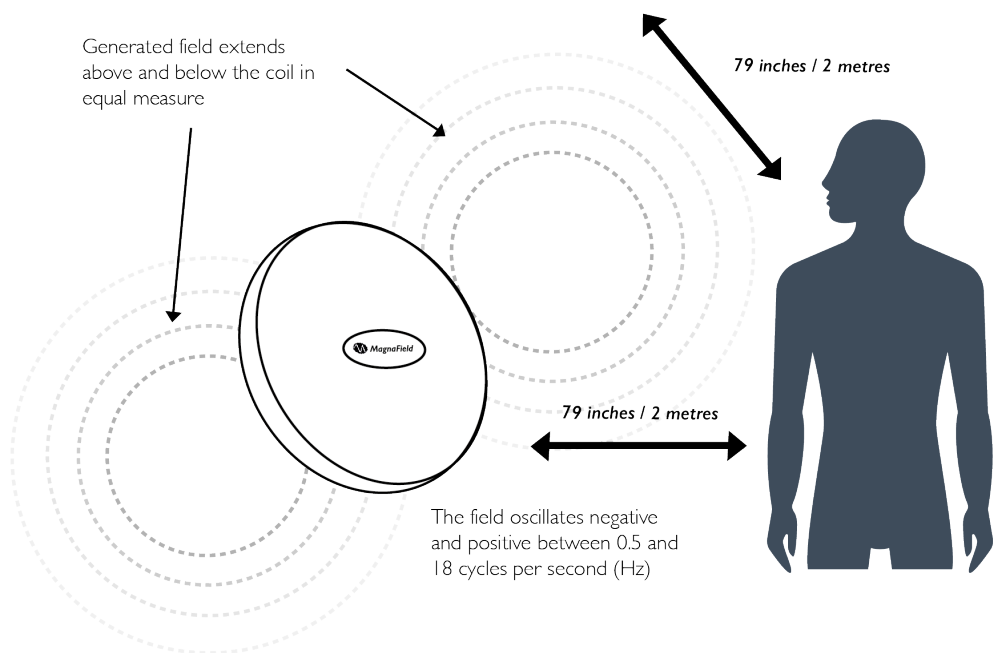
The **MagnaField®** unit incorporated the preceding properties in its induced field. The **MagnaField®** unit was first to reflect the added benefits gained at 1Hz – 5Hz. The unit had another world first with the introduction and successful utilisation of 0.5Hz oscillating pulses. The 0.5Hz pulsed frequency is a special feature of the **MagnaField®**. This lower frequency offers the greater benefits of low frequency biological and bio-energetic electromagnetic induction.

All frequencies promote tissue repair and there are NO KNOWN REPORTED SIDE EFFECTS of the **MagnaField®** Unit.

SUGGESTIONS FOR USE

0.5Hz -	<ul style="list-style-type: none"> - Ideal setting for first time treatment - Regenerates Cells - Helps Reduces Anxiety - It has an anti-inflammatory effect 	<ul style="list-style-type: none"> - Temporary pain relief. - Mitosis reduction. - Oxygen absorption. - Improved neurological signalling.
1Hz -	<ul style="list-style-type: none"> - Most efficient for temporary pain relief. 	
2Hz -	<ul style="list-style-type: none"> - Promotes phagocyte and T-cell production. - Stimulation of the immune system (Thymus). 	<ul style="list-style-type: none"> - Sedating, relaxing and calming effect - Assists with deeper sleep. - Reduction of bruising and bleeding. - Lymph drainage (micro-muscular movement),
3Hz -	<ul style="list-style-type: none"> - Most efficient for temporary pain relief. - Can assist lymph drainage; - Promotes sleep 	
4Hz -	<ul style="list-style-type: none"> - Pain modulation for intense pain for temporary relief. - Helps with stress relief 	
5Hz -	<ul style="list-style-type: none"> - Increased DNA synthesis; cellular signalling; repair and healing. 	
8Hz -	<ul style="list-style-type: none"> - Muscle tissue repair - Muscle tone; nerve regeneration. - Stimulation of ATP production. - Recharging and balancing of ionic and cell membrane potentials. 	
10Hz -	<ul style="list-style-type: none"> - General re-balancing of cellular activity - Improved oxygen uptake - Assists liver function. 	
12Hz-		<ul style="list-style-type: none"> - Assist in peripheral circulation - Increased blood flow through vascular relaxation; more Oxygen and nutrients available.
15Hz -		
18Hz -	<ul style="list-style-type: none"> - Increased metabolic rate; pre-sport or pre-exercise (for generally healthy people) 	

Please Note: The **MagnaField®** can assist the body in a mild detox over the first week of first use. Refer to page 10 for more information.



AN INTRODUCTION TO MAGNETIC RESONANCE INDUCTION THERAPY

Magnetic therapy is not a modern discovery. It was widely used by the Ancient Egyptians, Ancient Chinese and Ancient Greeks.

In 1773, Franz Mesmer began using magnets for healing. By 1884, about 10 000 physicians in the USA were successfully using various magnetic devices every day for therapeutic purposes. In 1924 the Nobel Prize was awarded to W. Einthoven for the discovery of the heart's electrical nature. In the same year, Hans Barger discovered that magnetic field of the brain which led to another ground-breaking invention in medicine: The Electroencephalogram or EEG. In 1963 Bale and McFee discovered that the heart produces a magnetic field which is not surprising as electrical current always produces a magnetic field.

In the USA doctors applied this discovery and saved lives every day by using the then newly discovered Electrocardiogram. The latest discoveries show that each organ in the body has its own electromagnetic field and that this field covers the whole body. In Europe, magnetic devices are used by private practices and in hospitals to speed up the healing process and increase the rate of recovery.

We are subject to magnetic effects in the environment every day of our lives and by our own magnetic energies. A force field of magnetic energy is created whenever a charged particle (e.g. an electron) moves. When billions of these electrons within the body, move, a multi-potential effect is exerted on you as a biological system. **MagnaField®** utilises this effect in a positive way by stimulating and supporting the process of healing.

THE MAGNAFIELD®

DEVELOPMENT HISTORY

Over recent years numerous types of electro-medical therapy systems for the treatment of injuries and painful conditions both in humans and in animals have been developed. Amongst these, Magnetic Field Therapy has been used in the medical profession for over 60 years.

Recent worldwide research into the effects of magnetic energy on body tissue has resulted in a clearer understanding of how and why magnetism plays such an important role in the balanced operation of every cell in the body. We have natural magnetic emanations from the earth itself at close to 10Hz and the outer orbit Schumann resonance 7.83 to 7.96Hz both of which have a subtle but critical effect on all living matter.

MagnaField®, a patented technology with extensive research and testing behind it, is one of the most advanced and effective units available on the market. It has been effectively used on numerous conditions and in many different countries since 1987.

The **MagnaField®** unit was successfully used in a double-blind, randomised, placebo-controlled trial of Pulsed Magnetic Field Therapy for the treatment of acute, sports-induced tissue injury. This was conducted by Associate Professor Irena Cosic, from Bio-Electronics Group, Department of Electrical and Computer Systems Engineering, Monash University, Melbourne, Australia in 1999, Cosic concluded:

“This study scientifically validated that Pulsed Magnetic Field Therapy applied using the MagnaField® can improve recovery of muscle injuries caused by exercise in terms of diminishing muscle tenderness, swelling, pain and improving range of motion.”

OBSERVED MAGNAFIELD® EFFECTS

MagnaField® uses low frequency, low power multiple form pulses. The oscillating electro-magnetic forces work in conjunction with a group of specific harmonics which are introduced through the body subjecting nerve and other cell tissue to changing electrical potentials which induce an analgesic effect and promote the healing of damaged tissues. The main effect of the **MagnaField®** is to assist the body to repair at a cellular level.

The following general effects of the **MagnaField®** can be referenced from hundreds of medical, veterinary, complementary medicine, scientific papers and journals. Many other associated effects have been noted in clinical practice.

Assists ionic transfer – calcium, potassium, and sodium balanced may be restored.

(Essential for normal cell function & health).

Increases protein synthesis and absorption rate.

(Cellular uptake providing healthy tissue and muscle elasticity)

Improves acid/alkaline pH balance, particularly if too acidic.

(This can assist with digestion and also helps with some arthritic conditions)

Reduces inflammation, swelling and pain (0.05Hz to 3Hz is optimum for temporary relief).

(Important phase prior to promotion of the healing process)

Promotes cell regeneration and assists healing: Oxygen transport and cellular uptake are improved at 8Hz.

(Helps to support a healthy immune system)

Increases blood flow, peripheral circulation may be enhanced (especially at 18Hz). *(May improve peripheral circulation, healing rate and reduce risk of more serious injury).*

Stimulates the release of endorphin, enkephalin, serotonin and noradrenaline for pain inhibition.

(Assisting the body's own natural pain inhibitors – temporary relief)

Synchronisation of dominant brain waves (0.5 and 1Hz).

(Assists with co-ordination and balance)

COMPARISONS OF FREQUENCIES BETWEEN THE **MAGNAFIELD®** AND OTHER PULSED ELECTROMAGNETIC DEVICES ON THE MARKET

There is a vast difference between the wave forms and harmonics used in the frequencies of the **MagnaField®** unit which sets it apart from all other PEMF products.

Magnacares® devices are unique in their nature as each frequency has a different effect on the cells.

Unlike the many PEMF devices on the market today, which use ONE FREQUENCY, and several strengths of that frequency, and are within the (50,000 to 500,000,000 microwave) frequencies, the **MagnaField®** operates at a much lower range, replicating the frequencies of the human cell (0.5 to 18 hz) and gently oscillating or vibrating in accordance with the cell's own vibratory field.

These higher frequency strengths, have certain benefits in pain control, and are widely used in hospitals and clinics. They can have a detrimental effect on the cell if used frequently, whereas the **MagnaField®** is designed to be used constantly on a 24-hour basis. This is because the units have a built-in rest phase, (20 minutes on/20 minutes off) and pulse at rapid on/off millicycles.

There are several waves used by other manufacturers (Sine, Sawtooth and Square).

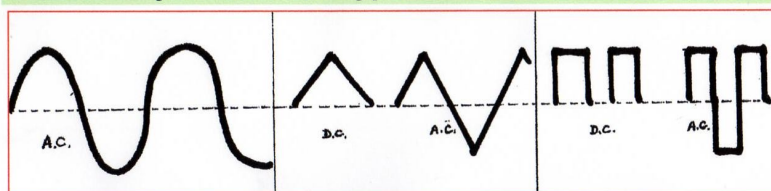
None of these replicate the human cell's own oscillating frequency whereas the **MagnaField®** replicate the wave forms and harmonics of the cell to be able to normalise the cells and keep them functioning as they should (See diagram A).

Healthy cells equal a healthy body.

Some common synthetic waveforms

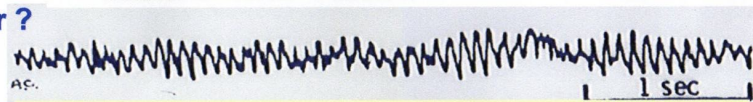
Used in Power Lines & Appliances, Communications, also in various Electro Medical Devices

Which do you see on a typical EEG, from the body??



- (a) **SINUSOIDAL ?**
Radio and sound - Used in ultrasound and interferential units
- (b) **SAWTOOTH ?**
Some other magnetic field units and TENS units
- (c) **SQUARE ?**
Some TENS & Ultrasound Units use this

Or ?



(d) This is from a normal readout of an EEG, (12Hz - Alpha Rhythm)

Typical of waveform of Magnafield.

Diagram A

SUGGESTED TREATMENT PROGRAMS

It is important to note that where a range of frequencies are quoted some experimentation may be necessary. Metabolic rate can and does vary from individual to individual and a number of other factors may be present that should be taken into account. **The following suggestions are a summary derived from clinics, professional carers and home users.**

These suggestions are provided as a guideline only and are not intended to replace advice given by your medical or health practitioner.

- Do not change medication without the supervision and/or consent of your doctor or healthcare professional.
- The **MagnaField®** is a valuable adjunct to any and every benefit treatment protocol.
- Due to the **MagnaField®** improving absorption of medications and nutrients, some conditions may require careful monitoring at first to ensure you are not overdosing (e.g. Insulin).

Lower frequency

If more than one condition is to be addressed and different frequencies are recommended it is more beneficial to use the lower frequency.

If any discomfort is noticed

Should any discomfort be noticed when the frequency is increased (there is no harm whatsoever) it may be as a result of toxins in the body being released as part of the natural detoxifying effect of the **MagnaField®**. It is an indication that the body is not yet ready for the higher frequency setting and it is suggested that a return to the previous or lower setting for a further 3-5 days would be beneficial. Remember, higher frequencies are not necessarily better.

The **MagnaField®** can assist the body in a mild detox over the first week of first use. This may give a mild unpleasant feeling in some cases as the body ejects toxins that have built up over time. You are better off without these toxins so be patient as their removal will speed up recovery.

General Guidelines

Much greater benefits are obtainable if treatment can continue overnight. As a guideline, the first treatment should be at 0.5Hz or 1Hz as this will improve subsequent response to higher frequencies. However, in any degenerative condition the best results are obtained at the 0.5Hz setting only.

Important Note:

The MagnaField® is not intended to replace any beneficial medical treatment protocol but it does help in a complimentary manner by assisting the body to absorb and utilise beneficial medicines. It will assist the body in the removal of toxic medicine waste material and supports the immune system. It will assist the body and mind to cope and has its own functions to improve peripheral circulation, oxygen and nutrient uptake in the cells. Pain relief and improved healing are well documented in clinical trials.

Every case is different, every person is different and often there are factors and conditions in the body known or unknown that include medication, treatment protocols, physiological, and emotional states of mind, all of which contribute to making most cases complex.

The **MagnaField®** operates at cellular level in order to assist the body's natural healing process and heals from the inside out. Individual disease states and conditions are not normally subject to this approach. The intent is the make every cell of your body a healthy cell and by doing so equip it with the means to combat disease.

Disclaimer:

No comment or statement made in this document is intended to give any indication of a 'cure' or guarantee of results from treatment. This would be contrary to current legislation.

Since 1989 we have not received any reports of adverse effects. When used as directed there have been no indications of anyone NOT receiving some benefit from using the MagnaField® unit.

ZERO EXCLUSIONS

Some PEMF devices have a list of exclusions due to the high frequencies at which they operate – frequencies which are outside of nature's own. **MagnaField®** can be used by everyone, without exception. It is safe to use if you are pregnant, suffer from epilepsy or fitted with a pacemaker.

TECHNICAL SPECIFICATIONS

Voltage Selection

NOTE: Operating this device with incorrect voltage will result in damage to the unit and invalidation of your warranty.

All **MagnaField®** units have a voltage selector integrated into the power entry module on the rear panel. All units are factory preset to match the voltage requirement of the country of destination.

However, should the unit be transported to a country with a different voltage and frequency the preset can be altered to the new voltage. Please follow the instructions below to change power settings.

1. Ensure that the power lead has been removed from the unit.
2. Using a small, flat headed screwdriver, open the fuse compartment within the rear power entry module. (see rear panel diagram).
3. Remove the voltage selector and re-insert with the required voltage facing outward. There are only two voltage settings selectable, 120V or 230V.
4. Push the selector block back into the power entry module until it clicks firmly in place.
5. Make certain that the desired voltage is displayed in the small window before reconnecting the unit to mains power.

Input: 120V/230V AC +/-10% ; 50/60Hz @ 0.1 Amp

Fuse: 2 x 20mm 5 Amp M205 Time Delay

Output: Pulsed 18V AC (13V rms)

Power: 10W pulsed, driving output coil

Induction: 0.4mV @ <0.2µT

Induced Current: In the micro Ampere range

Frequencies: 11 selectable in the range 0.5Hz – 18Hz

Timers: 20 minute standard duration; 'repeat mode' 20 minutes off then repeated until switched off.

This unit is a Class II medical device and as such has been tested for electrical safety too:

- European Standard (CE) 93/465/EEC, Class IIb Medical Device
- Australian Standards AS3200.1.0 with amendments 1&2 TCA (NATA) Test #75639
- ARTG – Australian Register of Therapeutic Goods (TGA) AUST L 13230
- FDA-CDRH (USA) Document #B123467 Classification-MZN, Device Est. #9618015

Cautionary information regarding generator power supplies:

Some modern Portable AC-Generators do not provide the correct AC power output with an accurate 50/60Hz sinusoidal waveform. Such power supplies can damage the **MagnaField®**. Please check compatibility first.

Country specific operating voltages:

The **MagnaField®** is factory pre-set to the correct input voltage for the country of destination. However, it is always advisable to make a visual check prior to first operation.

The **MagnaField®** comes with the Generator Control Unit, Output Coil with connecting plug and lead, User Manual, Country specific power lead, Warranty Card and Compliance Certificate.

FUSE REPLACEMENT:

Two M205 5A slow blow fuses are fitted. If no power is reaching the unit, disconnect it from the mains power supply and, using a small flat head electrical screwdriver, release the voltage selector cover and check the fuses. If they have blown then replace them with new ones of the same rating.

CLEANING:

This unit is not intended to be in direct contact with the body. However, if this does occur, clean with slightly damp cloth. Do NOT immerse the unit in liquid.

References

1. C. A. L. Bassett, A. A. Pilla, Clinical Orthopaedics #14, USA: 1977, pp 128- 143
2. R. O. Becker, 'Cross Currents', New York: Tarcher 1990, pp 151-153
3. M. Cheney, T. C. Martin, 'Nikola Tesla (1857 - 1943) Research and Inventions', Barnes & Noblem USA, 1992, pp 81-492
4. A. A Pilla, 'Electrochemical & Electromagnetic Bioeffects', Modern Bioelectricity, A. A Marino, Dekker, New York, 1988, pp 427-450
5. M. A Persinger, 'Treatment of Pain', Modern Magnetotherapies A. A. Merino, New York, 1988, pp 599-627
6. R. J. Grace, 'Health Implications of Magnetic Fields' 4th Oceania Symposium on Complementary Medicine, Aust, 1992, pp 199-134
7. R. Coghill, 'Electrohealing – The Medicine of the Future', Thorsens, London, UK, 1992, pp 47-78
8. G. J. Washnis, R. Z Hricak, 'Magnetic Fields and Living Tissue', Nova Publishing, Maryland, USA, 1993, pp 92-340
9. R. J. Grace, 'Pulsed Frequency Specificity in Magnetic Energy Treatments', Bioenergetic Therapies, Bemc Publications, 1993, pp 4-23
10. R. J. Grace, 'Pulsed Magnetic Energy as an Adjunct in Cancer Treatments', Adjuvant Nutrition in Cancer Conference, San Diego, 1994, paper#4
11. R. J. Grace, 'The Role of Biomagnetic Fields in Nutrition Uptake', 5th Oceania Symposium Complementary Medicine, Australia, 1996, pp 60-75
12. F. Rinker, 'The Invisible Force – Traditional Magnetic Therapy', Mason Service Publishing, London Ontario, Canada, 1997, pp 3-112
13. R. J. Grace, 'Biomagnetic Energy for Pain Relief and Healing', 2nd International Conference on Bioelectromagnetism', The Bioelectrics Group, Monash University, Melbourne, Australia, Fe 1998, Published by IEEE, pp 143-144

MagnaField®

PREMIER FULL-BODY PEMF THERAPY DEVICE

MODEL: MF2200

Micro Vibrational Pulsed Electro Magnetic Therapy(PEMF) Unit

WARRANTY TERMS

This unit is warranted free from manufacturing defects for a period of 3 years from the date of purchase. Please note that there are no user-serviceable parts. Should any defects arise the unit must be sent back to the manufacturer for service or repair.

This warranty does NOT cover liquid or accidental damage. The MagnaField® is a Class II Medical device and should be treated accordingly. Please note that warranty is void if the unit is opened.

The Three-Year Limited Warranty is a voluntary manufacturer's warranty. It provides rights separate to rights provided by consumer law, including but not limited to those relating to non-conforming goods.

As such, the Three-Year Limited warranty benefits are in addition to, and not instead of, rights provided by consumer law.

Consumers have the right to choose whether to claim service under the Three-Year Limited Warranty or under their consumer law rights.

NOTE: A Warranty Card will be sent upon purchase of any Magnacares® PEMF device. Please keep safe as this will be needed to claim any device issues that meet the warrant terms indicated above.



MAGNACARES®

INVIGORATE YOUR INTERNAL STATE AT CELLULAR LEVEL

1st Floor
31 The Town,
Enfield,
Greater London
EN2 6LU
United Kingdom

T: +44 20 8367 2186

E: info@magnacares.com

W: www.magnacares.com



[LEAVE A REVIEW](#)